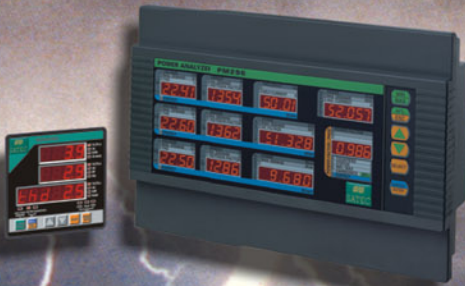


SATEC

Powerful Solutions



PM296
RPM096

PM296/R

Special Features

- ◆ Revenue meter
- ◆ Class 0.2S accuracy
- ◆ Current range measurement up to 200%
- ◆ On-board 1M open memory for data logging
- ◆ Real Time Clock with external synchronization (GPS)

Monitoring

- ◆ True RMS measurements of up to 1,000 electrical parameters
- ◆ Simultaneous display of 3 (remote) or 11 parameters

Measurement:

- | | |
|-------------------|---------------------|
| ◆ Voltage | ◆ Demand |
| ◆ Current | ◆ Min/Max |
| ◆ Neutral Current | ◆ Voltage Harmonics |
| ◆ kW | ◆ Current Harmonics |
| ◆ kvar | ◆ Power Harmonics |
| ◆ kVA | ◆ K-Factor |
| ◆ Power Factor | ◆ Voltage Unbalance |
| ◆ Frequency | ◆ Current Unbalance |
| ◆ kWA | ◆ Phase Rotation |
| ◆ kvarh | ◆ Phase Angle |
| ◆ kVAh | |

Comprehensive setpoint system

- ◆ 16 programmable setpoints with 4 triggering conditions by AND/OR gating and 4 setpoint action types per setpoint

Fast TOU / Energy Management

- ◆ 8 programmable energy registers for 16 tariffs
- ◆ Connection to external energy counting meters
- ◆ 3 programmable demand registers for 16 tariffs
- ◆ 16 daily profiles, up to 8 tariff changes per day
- ◆ 2-year calendar

Communications

- ◆ Dual port with LED indicators
- ◆ Multi-protocol: (ASCII/Modbus RTU/DNP3.0 level 2) for simultaneous communication with utility and customer
- ◆ Assignable Registers for data selection

Control

Wide range of inputs and outputs built-in for maximum control:

- ◆ 12 digital inputs
 - ◆ status
 - ◆ synchronization
 - ◆ pulsing
- ◆ 6 relay outputs
 - ◆ control
 - ◆ setpoint
 - ◆ pulsing (KYZ)
- ◆ 1 analog input: 0-10VDC / 0-120VDC / 0-220VDC or temperature measurement
- ◆ 2 analog outputs (0-20mA / 4-20mA / \pm 1mA / 0-10V)

The **PM296/RPM096** Power Quality Analyzer is a multi-function instrument that measures, records, controls, analyzes - and performs other vital functions you may not have thought about that are necessary for



RPM096

Harmonic and Disturbance Analysis

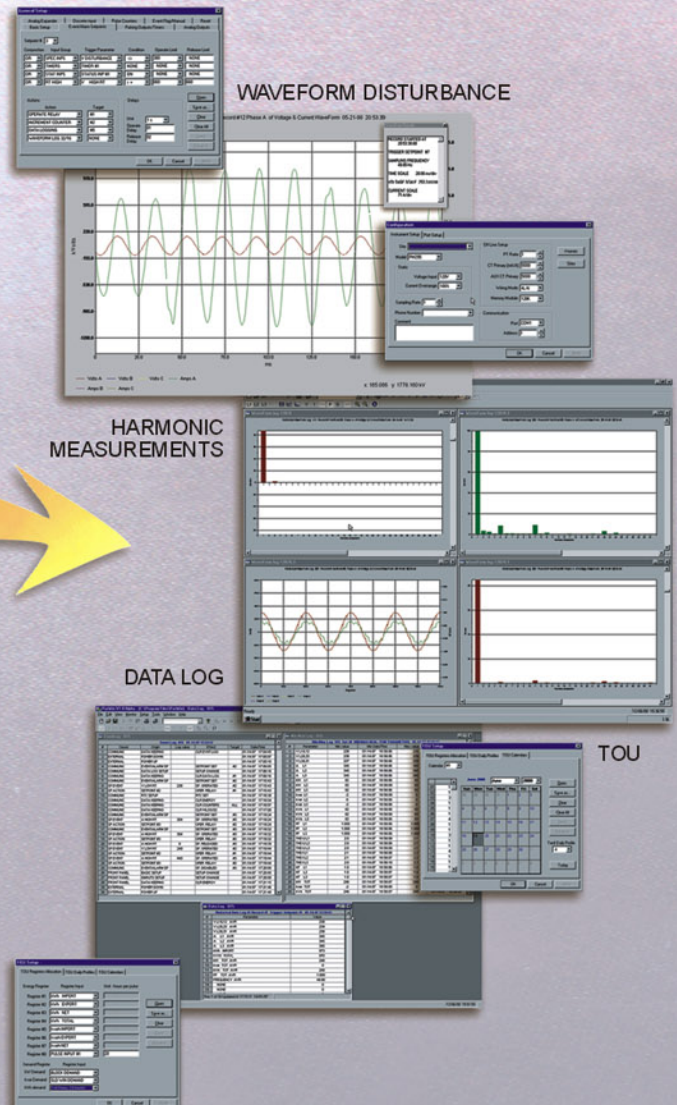
- ◆ real time harmonic monitoring
- ◆ waveform logging for individual harmonic analysis
- ◆ harmonic power **direction** flow
- ◆ waveform logging for disturbance analysis:
 - ◆ sag/swell
 - ◆ transient recording
 - ◆ fault

You choose:

- ◆ any number of cycles after disturbance trigger
- ◆ how to allocate memory Prefault/Postfault
- ◆ 128 samples per cycle
- ◆ 32 samples per cycle



Applied Software PASWIN



comprehensive
and safe energy
management.
With the
PM296/RPM096,
SATEC brings you
the complete
solution for your
energy needs of
today - and
tomorrow.

SATEC

NEW

PM296/RPM096



RPM096



PM296



RDM096

Class 0.2S Accuracy

Parameter	Accuracy		
	Reading, %	Full Scale (FS), %	Conditions
Voltage	0.1	0.01	10% to 120% FS
Line current	0.2	0.007	1% to 200% FS
Active power	0.2	0.002	PF ≥ 0.5
Reactive power	0.2	0.002	PF ≤ 0.9
Apparent power	0.2	0.002	PF ≥ 0.5
Power factor		0.35	PF ≥ 0.5, 2% FSI
Frequency	0.1		
Neutral (unbalanced) current	0.3	0.01	1% to 200% FS
Ampere demand	0.2	0.007	1% to 200% FS
kW demand	same as for active power		
kvar demand	same as for reactive power		
kVA demand	same as for apparent power		
Total harmonic distortion	1.5	0.2	≥ 1% FSI, I(1) ≥ 10% FSU(FSI)
Total demand harmonic distortion		1.5	≥ 1% FSI, I ≥ 10% FSI
Active energy import & export	Class 0.2S (IEC 687-1992-6)		
Reactive energy import & export	Class 0.2, under conditions as per IEC 687-1992-6		
Apparent energy	Class 0.2, under conditions as per IEC 687-1992-6		

*@80% to 120% of voltage FS and 1% to 200% of current FS

**@ 10% up to 80% of voltage FS and 1% to 200% of current FS

Measurement error is typically much less than the maximum error specified here.

SATEC, Ltd.

Har Chotzvim Science Based Industrial Park
P.O.Box 45022, Jerusalem, 91450 Israel
Tel.: 972-2-541-1000 Fax: 972-2-581-2371
e-mail: satec@satec.co.il www.satec.co.il

SATEC, Inc.

One Springfield Ave., Summit, NJ 07901
Tel: (908) 608-0500 Fax: (908) 608-0535
e-mail: satec@oksatec.com www.oksatec.com



Ordering Information

PM296 or RPM096- [] - [] - [] - []

Voltage Inputs

0* 690V AC Nominal
U Voltage Input
120V AC Nominal
Voltage Input

Current Inputs

1 1 Ampere
5* 5 Ampere

Power Supply

ACDC* 95 - 250V AC and 70 - 330V DC
1DC 9 - 18V DC
2DC 18 - 36V DC
3DC 36 - 72V DC

Analog Output

00 No Analog Output
A2 0 - 20 mA (0-10-20)
A4 4 - 20 mA (4-12-20)

Ground Leakage or Neutral Current Input

0 No Ground Leakage or Neutral Current Input
L Ground Leakage Current Measurement (5mA)
N1 Neutral Current 1Amp Input
N5 Neutral Current 5Amp Input

* Standard

Example:

PM296-0-5-ACDC-A4-0 or PM296-5-ACDC-A4

RDM096- [] - []

Mounting

M Panel Mounted
P Portable

Cable Length

1L 0.4 Meter (1Ft)
2L 1.8 Meter (6Ft)
3L 3.0 Meter (10Ft)

Example: RDM096-M-3L

For use only with RPM096

Distributor

SATEC
Powerful Solutions