

MULTIFUNCTION  
POWER FACTOR METER

# C192PF8

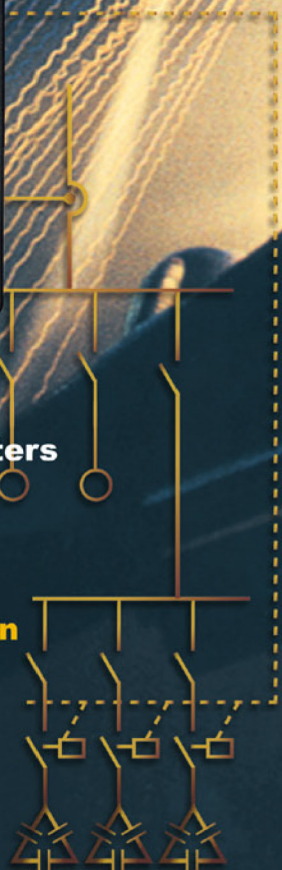
Power Factor Manager



Introducing the new line of  
Power Factor Controllers and Powermeters

- **Dual power factor**
- **Controls up to 8 capacitor banks**
- **Phase failure protection**
- **Harmonic and low voltage protection**
- **Multi-purpose switches**

 **SATEC**  
*Powerful Solutions*



MULTIFUNCTION  
POWER FACTOR METER

# C192PF8

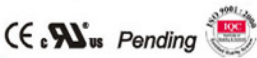


**Class 0.5 Accuracy**

- Bright LED displays (three windows, up to 45 pages) with adjustable display update time and automatic scrolling
- Percent load LED bar graph
- Alarm LED indicator (setpoint programmable)
- Communication LED indicators
- 8 programmable relays for alarm / setpoint / energy pulsing
- 16 programmable setups for alarm / control / trip functions
- Failsafe relay operation
- Digital input for status or external synchronization
- 4 counters operated and released by user-defined triggers
- RS-485 communications (RS-232 optional), ASCII/Modbus protocols, assignable registers
- Optically isolated programmable analog output 0-20 mA / 4-20 mA (option)
- Demands: predicted, sliding, accumulated, maximum
- Energies: import, export, net (active and reactive energy)
- Compact size: 144 x 144 mm.

Parameter	Reading%	Full Scale%
Voltage		0.3
Line current		0.3
Active power		0.4
Reactive power		0.4
Apparent power		0.4
Power factor		1
Frequency	0.02	
Neutral (unbalanced) current		0.6
Ampere demand		0.3
kW demand		same as for kW
kVA demand		same as for kVA
Active energy import & export		same as for power
Reactive energy import & export		same as for power
Apparent energy		same as for power

Measurement error is typically much less than the maximum error specified here.



## Ordering Information

C192PF8- [ ] - [ ] - [ ] - [ ] - [ ]

### Voltage Inputs

0\* 690V AC Nominal Voltage Input  
U 120V AC Nominal Voltage Input

### Current Inputs

1 1 Ampere  
5\* 5 Ampere

### Power Supply

ACDC\* 90 - 264V AC and 85 - 290V DC  
1DC 10 - 20V DC  
2DC 20 - 38V DC  
3DC 38 - 72V DC

### Communication

0\* RS-485  
R2 RS-232

### Programmable Analog Output

0 No Analog Output  
A2 0 - 20 mA  
A4 4 - 20 mA

\* Standard

Example: C192PF8-0-5-ACDC-0-A2

**SATEC, Ltd.**

Har Chotzvim Science Based Industrial Park  
P.O.Box 45022, Jerusalem, 91450 Israel  
Tel.: 972-2-541-1000 Fax: 972-2-581-2371  
e-mail: satec@satec.co.il www.satec.co.il

**SATEC, Inc.**

One Springfield Ave., Summit, NJ 07901  
Tel: (908) 608-0500 Fax: (908) 608-0535  
e-mail: satec@oksatec.com www.oksatec.com

Distributor

**SATEC**  
Powerful Solutions